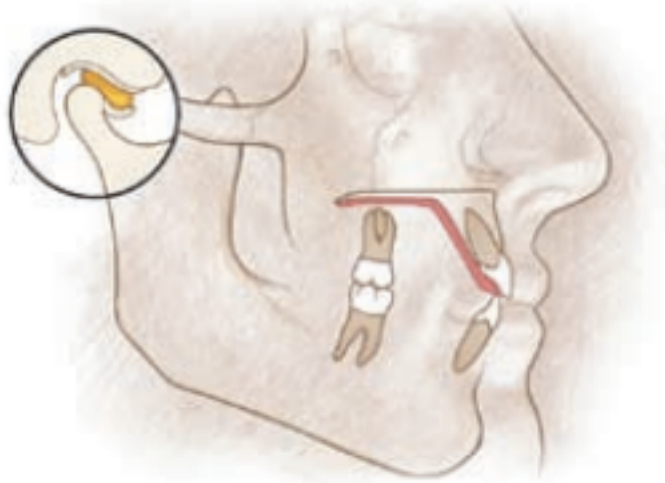


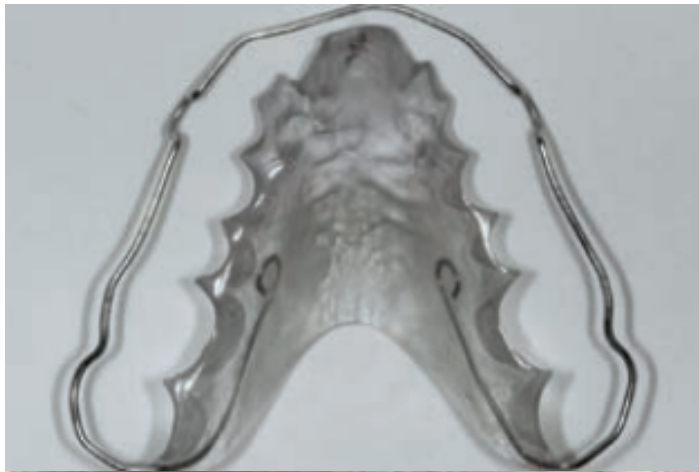
The Kois Deprogrammer

Art Dental Lab: Case Demonstration 1

About the KD



- * The Kois Deprogrammer is a palatal-coverage maxillary acrylic device with a flat plane lingual to the anterior teeth. It separates the dental arches and provides a single lower-central incisor contact against the anterior bite plane.



- * The KD is an effective device to mount and achieve bite registrations for patients with abnormal occlusal attrition.
- * The patient will wear the appliance for 1 week until necessary muscle deprogramming is accomplished.

(Jayne, 2006, p. 1)

Before



- * In repose, no teeth can be seen.



- * When smiling, the right side is high and the left side is low.



* Worn out anterior mandibles

* Occlusal dysfunction



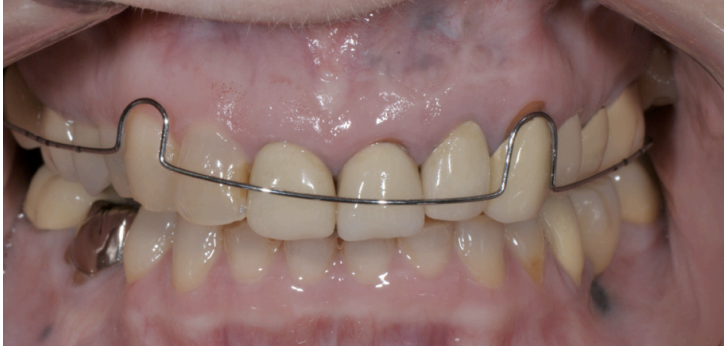


* No home for the bite



* Worn out teeth with eruption on anteriors

Opening the Vertical



- * The KD is mounted in CR to open the vertical.

- * With and without the KD



Mounting Cast



- * The mounting cast from the bite record shows open VDO

Diagnostic Wax-Up



Provisional Bridge



ZirconiArt Bridge and Crowns





Before and After



References

- * Jayne, D. (2006). A Deprogrammer for Occlusal Analysis and Simplified Accurate Case Mounting. *The Journal of Cosmetic Dentistry*. 21(4), 1-2.